



















































# V-PACKING REPLACEMENT

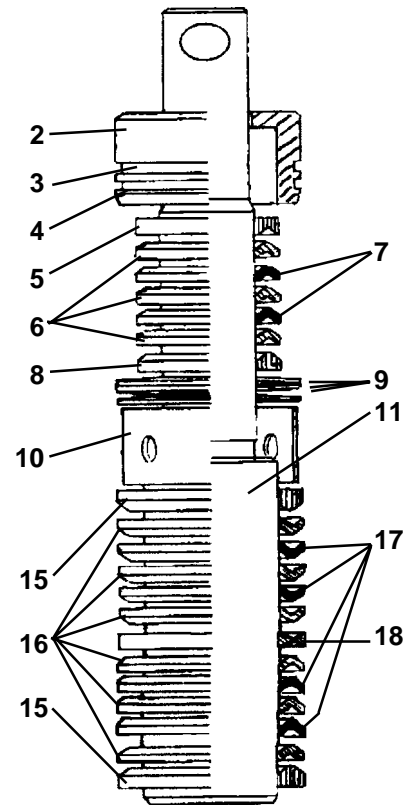
## DISASSEMBLY

1. Remove the Fluid Pump as per "Fluid Pump Disconnect" instructions on page 18.
2. Unscrew the packing nut and suction assembly. Push piston rod out through bottom of pump body. Remove the upper packings, belleville springs, tube spacer and lower packing set using packing removal tool (PN 331-153).
3. Disassemble and clean all parts for reassembly. Discard old packings, adaptors and O-Rings.

## REASSEMBLY

1. Lubricate piston rod with oil or grease.
2. Soak leather packings in throat seal oil or other light-weight oil for 10-15 minutes.
3. Reassemble all parts onto piston rod in following order as per Fig.15 & 16:
  - a. Start with lower male adaptor (15)
  - b. Five V-Packings (16 & 17), "V" inverted.
  - c. Female adaptor (18).
  - d. Five V-Packings (16& 17), "V" up.
  - e. Male Adaptor (15)
  - f. Slide on tube spacer (10).
  - g. Three Belleville Springs (9) starting with the first spring facing down (∧), second one facing up (∪), and the third one facing down (∧).
  - h. Upper male adaptor (8).
  - i. Five V-Packings, "V" inverted (6 & 7).
  - k. Place O-rings (3 & 4) onto seal holder (2)
  - l. Lubricate outside diameter of V-packings with white lithium or multipurpose grease.
  - m. Slide seal holder (2) over Upper Packing Set.
  - n. Lubricate threads on inside of pump body with white lithium or Multipurpose grease.
4. Hold pump body in one hand upside down and slide entire piston assembly with packings up into pump body. While inserting piston and packing assembly,
5. Install packing nut, handtight only. Push piston rod up to its upper position.
6. Connect the fluid pump onto Unit as per "Fluid Pump Reinstall" Procedures on page 21.

FIGURE 15



# FLUID PUMP - PN. 331-209 (2400, 2500, 2600 Lo-Boy)

## FIGURE 16

PN. 331-236 (2600 Hi-Boy)

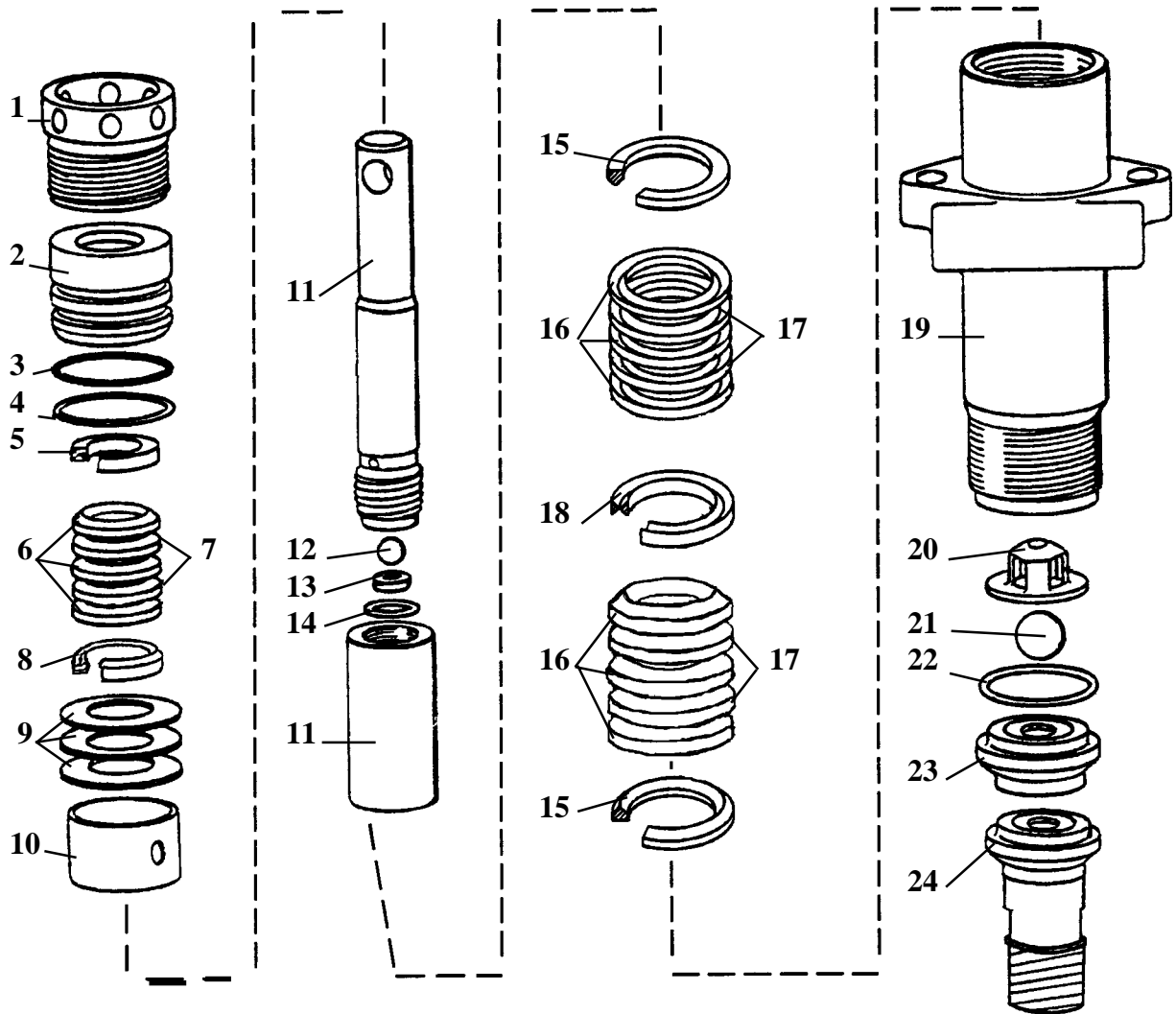
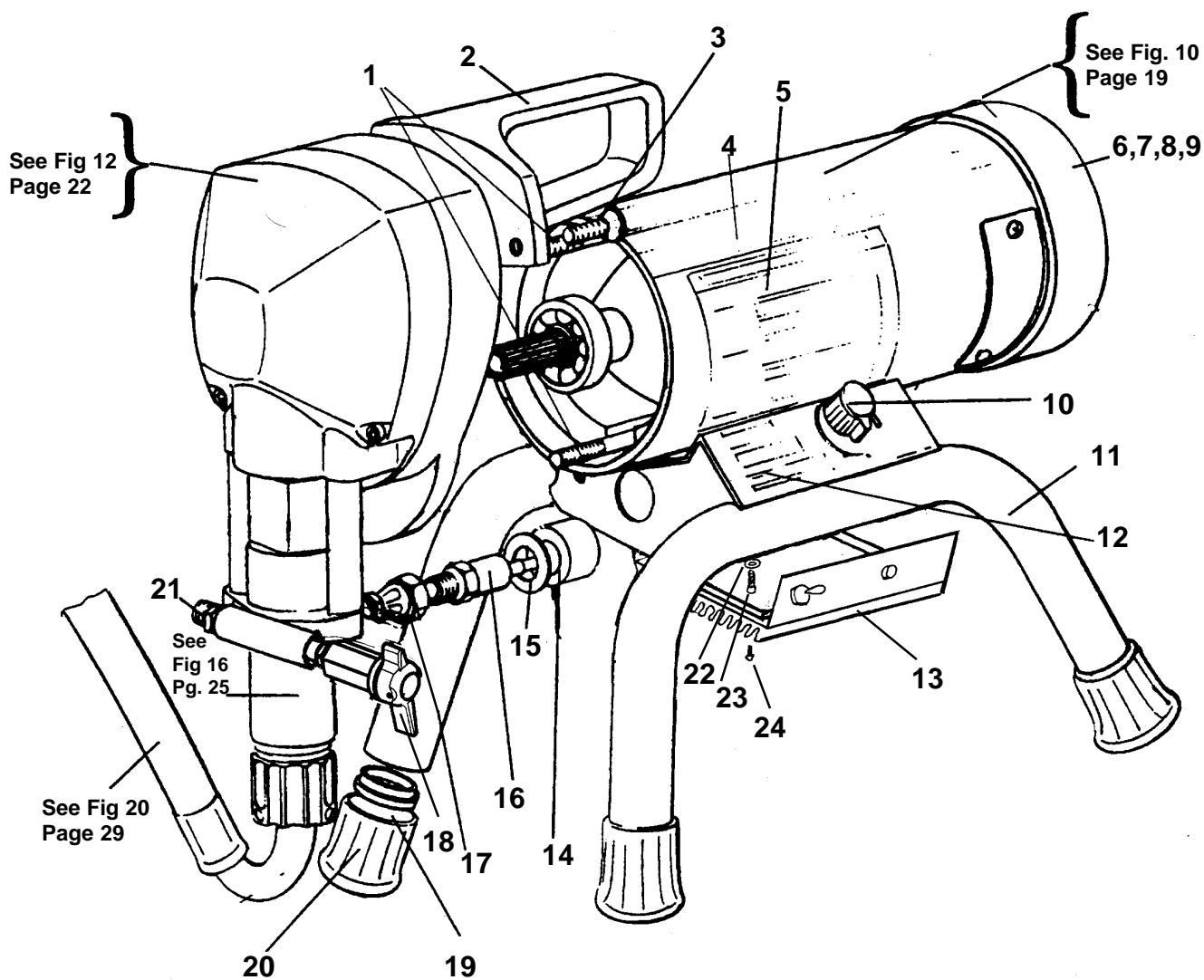


FIGURE 15 & 16 PARTS LIST					
ITEM NO.	PART NO.	DESCRIPTION	ITEM NO.	PART NO.	DESCRIPTION
1	331-037	Packing Nut	13	331-026	Seat
2	331-019	Seal Holder	14*	331-100	O-Ring PTFE
3*	331-020V	O-Ring Viton	15*	331-014	Adapter Male(2)
4*	331-020T	O-Ring PTFE	16*	331-016	V-Packing-Plastic (6)
5*	331-021	Adapter Female	17*	331-016L	V-Packing-Leather(4)
6*	331-023	V-Packing-Plastic (3)	18*	331-015D	Adapter Female
7*	331-023L	V-Packing-Leather (2)	19	331-011	Fluid Body
8*	331-022	Adapter Male	20	331-029	Retainer
9	331-025	Belleville Springs (3)	21*	331-030	Ball
10	331-018	Tube Spacer	22*	331-032T	O-Ring PTFE
11	331-093	Piston Assembly	23	331-033A	Seat Lo-Boy
12*	331-027	Ball	24	331-292	Seat Hi-Boy
			*	331-210	Packing Kit

# MACHINE ASSEMBLY 2400/2500

## FIGURE 17

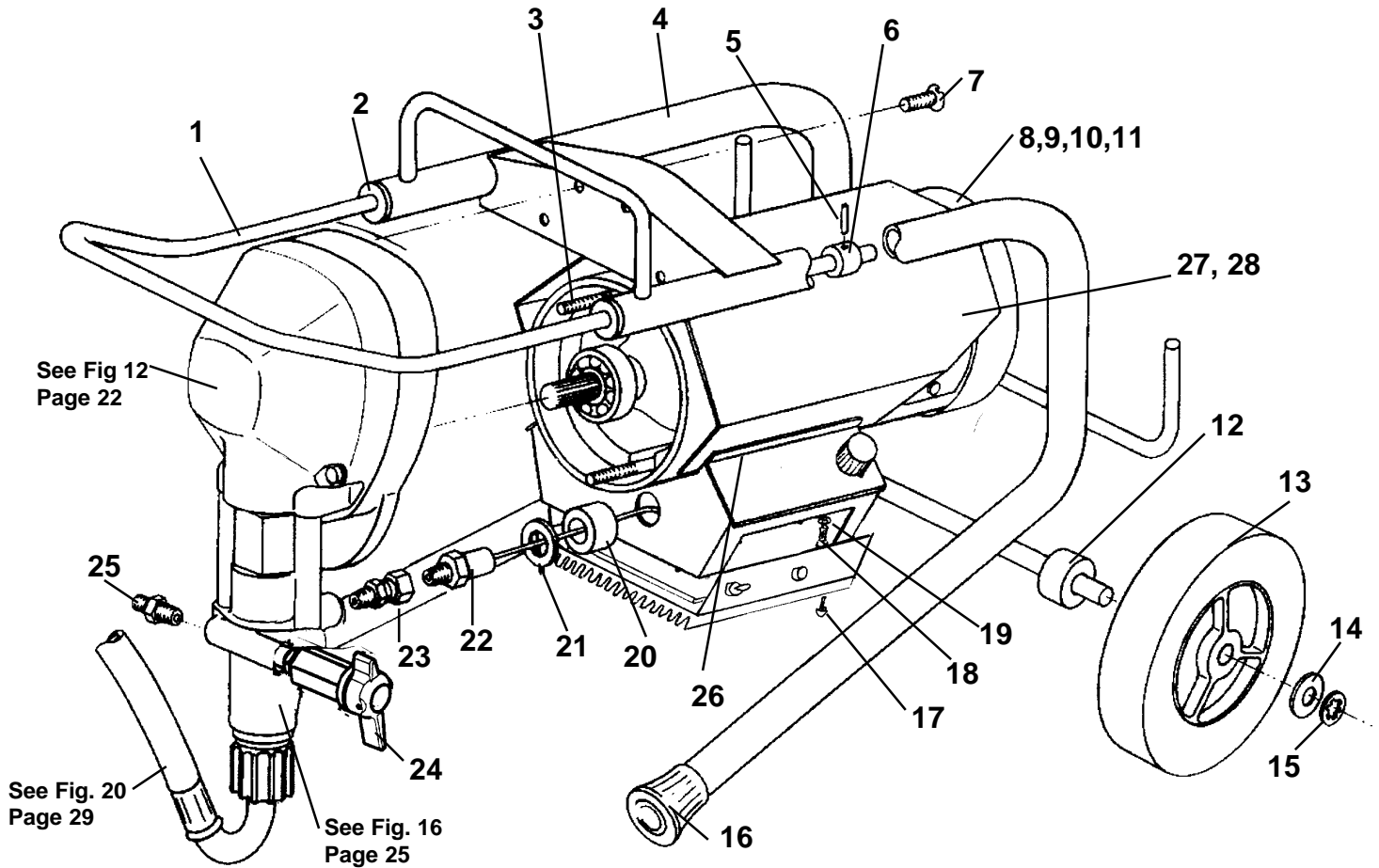


### FIGURE 17 PARTS LIST

ITEM NO.	PART NO.	DESCRIPTION	ITEM NO.	PART NO.	DESCRIPTION
1	331-216	Motor Screw (2400)	13	331-315	Pressure Control Ass'y
	331-215	Motor Screw (2500)	14	331-151	Seal
2	331-079	Handle	15	114-009R	Washer, Nylon
3	100-377	Screw - Torque (T-27)	16	331-294	Sensor
4	101-107	Label (2400)	17	100-003	Swivel Connector
	101-108	Label (2500)	18	100-180	Prime/Pressure Relief Valve
5	101-005	Label - Warning	19	331-094	Plug (4)
6	331-212	Fan	20	331-048	Rubber Boot (4)
7	331-213	Fan Cover	21	115-019	Hose Connector
8	117-090	Screw (3)	22	331-103	Washer (4)
9	331-070	Motor (2400)	23	100-312	Screw (4)
	331-068	Motor (2500)	24	111-037	Screw (4)
10	117-044	Knob			
11	331-344	Frame Ass'y			
12	101-069	Label (2400, 2500)			

# MACHINE ASSEMBLY - 2600 LO-BOY

## FIGURE 18



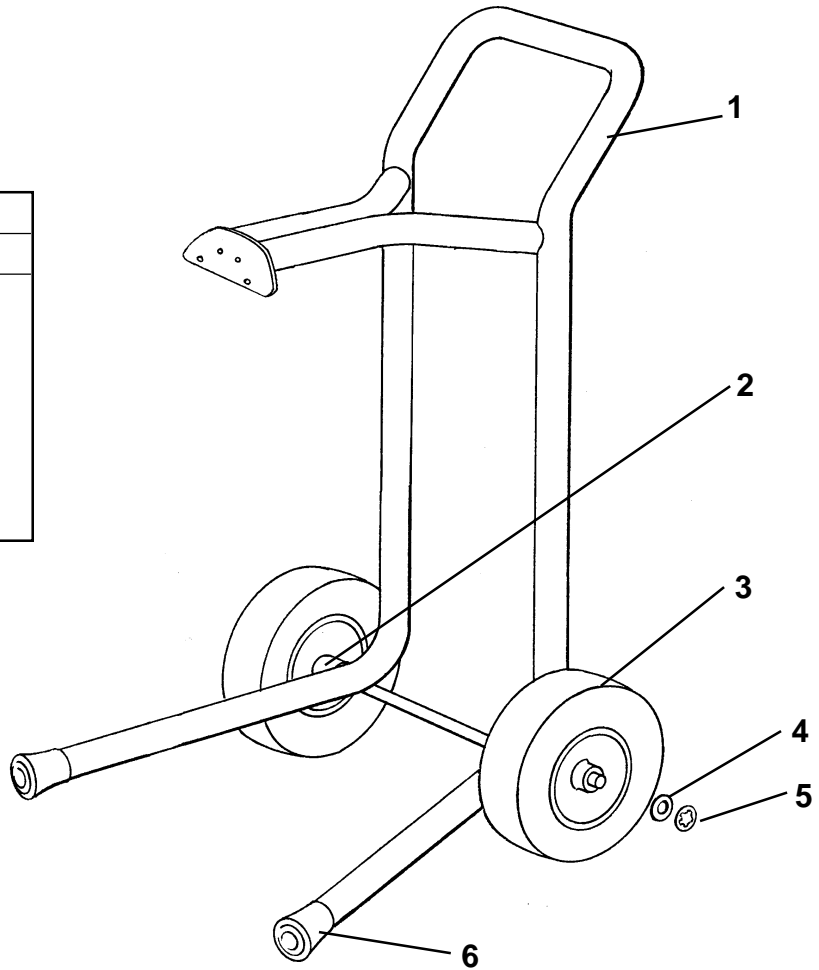
### FIGURE 18 PARTS LIST

ITEM NO.	PART NO.	DESCRIPTION	ITEM NO.	PART NO.	DESCRIPTION
1	331-174	Handle	15	143-032	Retaining Ring (2)
2	331-176	Bushing (2)	16	331-048	Rubber Boot (2)
3	331-215	Motor Screw (2)	17	111-037	Screw (4)
4	331-171	Frame	18	100-312	Screw (4)
5	331-222	Roll Pin (2)	19	331-103	Washer (4)
6	331-175	Spacer (2)	20	331-151	Seal
7	100-377	Screw-Torq. (T-27)	21	114-009R	Washer
8	331-212	Fan	22	331-294	Sensor
9	331-213	Fan Cover	23	100-003	Swivel Connector
10	117-090	Screw (3)	24	100-180	Prime/Pressure Relief Valve
11	331-068	Motor	25	115-019	Hose Connector
12	113-030	Spacer (2)	26	331-178	Rubber Extrusion
13	331-189	Wheel (2)	27	331-199US	Motor Cover
14	143-028	Washer (2)	28	101-134	Label (2600)

# LP2600 HI-BOY FRAME

FIGURE 19

FIGURE 19 PARTS LIST		
ITEM	PART NO.	DESCRIPTION
1	331-273	Frame
2	331-289	Spacer (2)
3	113-017	Wheel (2)
4	143-028	Washer (2)
5	143-032	Retaining Ring (2)
6	331-048	Rubber Boot (2)



# SUCTION ASSEMBLIES

## SUCTION ASSEMBLY PARTS, MODELS 2400, 2500 & 2600 (Lo-Boy)

PART NO. 331-238

FIGURE 20

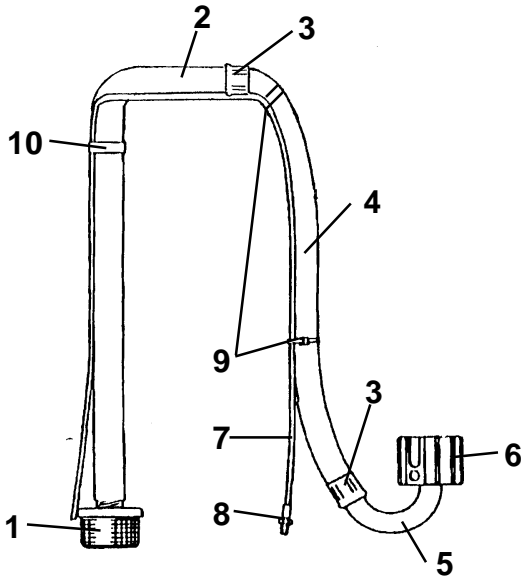


FIGURE 20 PARTS LIST		
ITEM NO.	PART NO.	DESCRIPTION
1	331-217	Inlet Strainer
*	331-290	Suction Hose Ass'y Incl. Items 1,2,3,4,5,6
2	331-384	Suction Tube
3	331-281	Ferrule
4	331-383	Suction Hose
5	331-035	Suction Elbow
6	331-034	Suction Nut
*	331-231	Bypass Hose Ass'y Incl. Items 7 & 8
7	111-013	Bypass Hose
8	331-090	Fitting
9	111-016	Nylon Tie
10	331-135	Spring Clip

## SUCTION ASSEMBLY PARTS

FIGURE 21

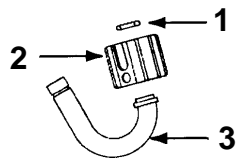


FIGURE 21 PARTS LIST		
ITEM NO.	PART NO.	DESCRIPTION
1	331-036T	O-Ring, PTFE
2	331-034	Nut - Suction
3	331-035	Elbow- Modified

## MODEL 2600 HI-BOY SUCTION ASSEMBLY, PART NO. 331-272

FIGURE 22

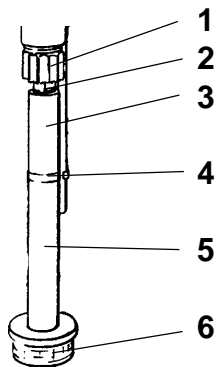


FIGURE 22 PARTS LIST		
ITEM NO.	PART NO.	DESCRIPTION
1	331-034	Suction Nut
2	331-292	Suction Seat Ass'y
3	331-237	Bypass Hose
4	331-135	Spring Clamp
5	331-285	Inlet Tube
6	141-008	Filter